

4 3 2 1

REVISIONS				
ZONE	REV	DESCRIPTION	DATE	APPROVED
ALL	0	RELEASE	DATE	JG

XL-MI-G-PL-750

1. Inlet and Outlet No-Hub Connections.
2. Maximum Flow Rate: 75GPM
3. Grease Capacity: 750lbs.
4. Liquid Holding Capacity: 140 Gallons
5. Maximum Solid Capacity: 15 Gallons
6. H2O Load Rated Access Covers
7. Maximum Operating Temperature: 190° Continuous
8. A Minimum (each) of 3.5ft. of Cover and 1.0% Slope is Required For All Exterior 4" or 6" Piping

DETAILS

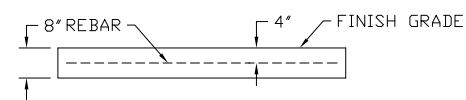
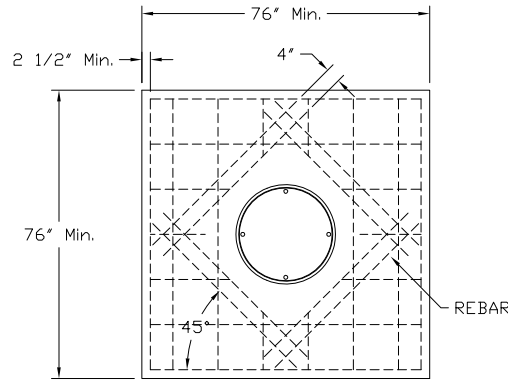
- Certified by CSA and IAPMO to ASME A112.14.3
- Factory installed internal piping with flow control orifice.
- 3/8" thick seamless high density polyethylene.
- Full internal access through lids.
- Vent not required for proper operation.
- Narrow body design allows access through doorways and stairwells.
- Designed for above or below ground installations.
- Integral Anti-siphon Air Relief port.

SUFFIX

- AK
- C
- DI
- DP
- EP
- F6
- HLA

OPTIONAL VARIATIONS

- High water anchor kit
- Lid extension(specify)
- Ductile iron lid
- Dosing pump
- Enzyme port
- 6" No Hub inlet/outlet connection
- High level alarm



CONCRETE SLAB DETAIL FOR H20/HS20 LOAD RATING

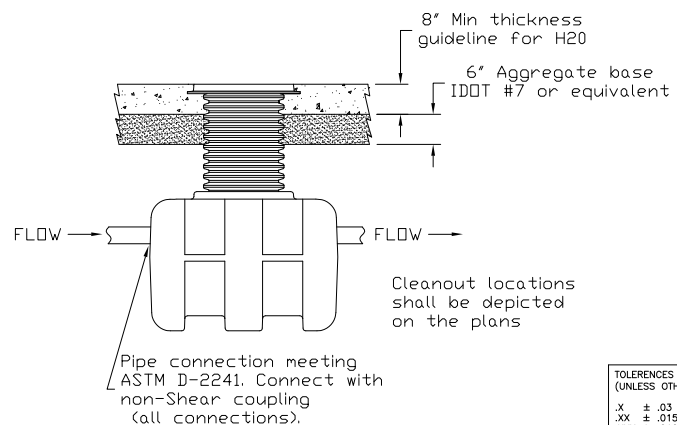
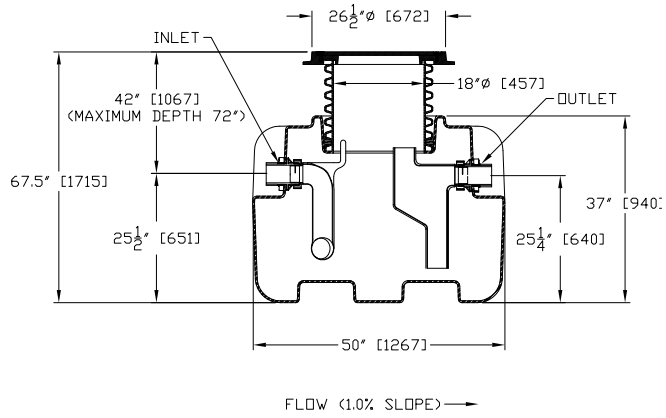
INSTRUCTIONS FOR BELOW GRADE INSTALLATION

EXCAVATION

1. Install the interceptor(s) as close as practical to the fixtures being served.
2. The excavation must be a minimum of 12" greater on all sides of the tank.
3. The depth of the excavation must be greater than 6" on the bottom of the interceptor.
4. Fill the interceptor with water prior to backfilling in order to prevent the interceptor from floating.
5. Fully install the double wall corrugated pipe and lid prior to backfilling.
6. Concrete or finishing material requirements is to be determined by the specifying engineer.
7. Encase the interceptor in well-packed 3/4" rock, or sand.
8. To prevent float out; the Anchor kit is recommended for installations in high water table conditions. This is to be determined by the specifying engineer.

NOTES:

- Concrete to be 28 day compressive strength to 4000psi.
- No. 4 rebar (1/2"Ø) grade 60 steel per ASTM A615 connected with wire
- Rebar to be 2.5" from face of concrete.
- Rebar spacing 12" grid, 4" spacing around access openings.
- All penetrations to be sleeved or have slip connections.
- Minimum 36" from top of slab to top of tank.
- A minimum of 3.5' of coverage and 1.00% slope is required for all external piping.
- Unit can be installed above grade in an external environment. Frost proof requirements for installation region should be followed.



140 Gallon Liquid Capacity

TOLERANCES (UNLESS OTHERWISE SPECIFIED)				
.X	± .03			
.XX	± .015	750LB. GREASE CAPACITY BIG MAX INTERCEPTOR		
.XXX	± .010	SIZE	COLOR/FINISH	DWG NO.
∠	± 1"	C	---	XL-MI-G-PL-750-FM
TYP. DRAFT ANGLE = 2°		SCALE	MAT'L	REV
DRAWN BY JG		----	---	0
APPROVED BY JG		SHEET 1 of 1		

4 3 2 1

Job or File name
Date sent
Sent to (Name)